

# SAN FRANCISCO DISTRICT BUSINESS OPPORTUNITIES OPEN HOUSE

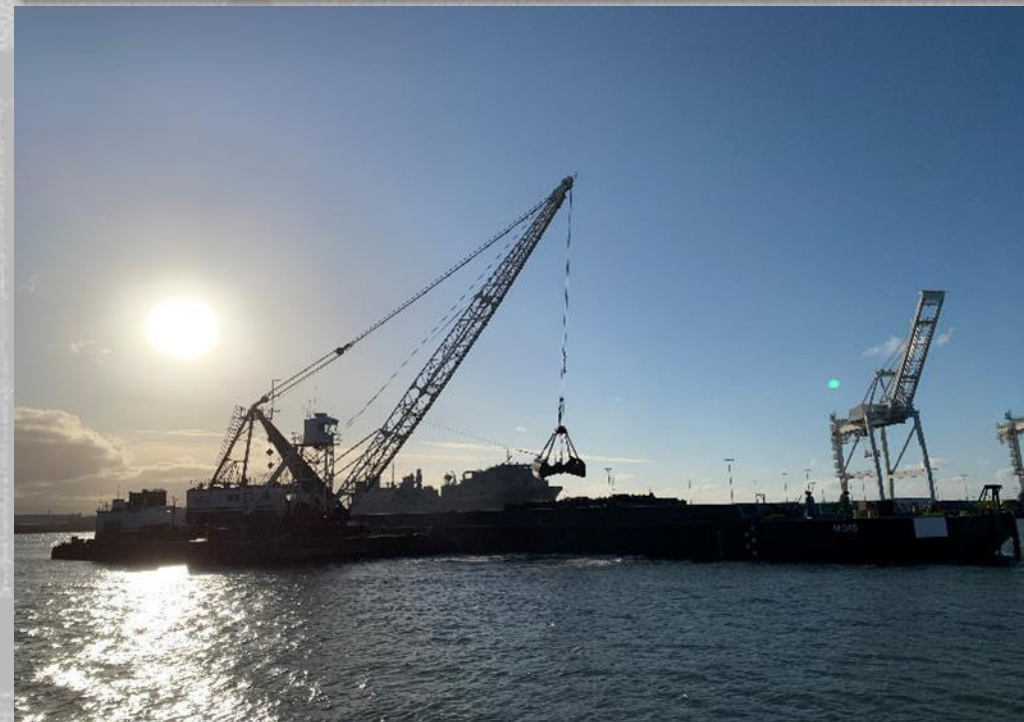
## FY 2022 DREDGING PROGRAM

AL PANICCIA  
NAVIGATION PROGRAM MANAGER  
SAN FRANCISCO DISTRICT

18 March 2022



US Army Corps  
of Engineers®





# NAVIGATION BUSINESS LINE

## → MISSION

- To provide safe, reliable, efficient, and environmentally sustainable waterborne transportation systems for movement of commerce, national security needs, and recreation.

## → Program Objectives

- Maintain inland waterways and coastal channels, with emphasis on those with a high or moderate level of commercial use; and
- Support investment that would provide a high return to the Nation.

## → SPN Navigation Program

- Averages 14 projects and \$75 million per year.
- And our debris mission.



# FY 2022 DREDGING PROCUREMENT PLAN



Project	Method	Acquisition Type	Award Month	Price Range
Richmond Inner Harbor	Clamshell 250K CY	IFB SBA Set-Aside	May '22	\$5M to \$10M
San Rafael Creek	Clamshell 220K CY	IFB SBA Set-Aside	Jun '22	\$5M to \$10M
San Joaquin River (Port of Stockton)	Cutterhead/Pipeline 300K CY	IFB Unrestricted	Jun '22	\$5M to \$10M
Sacramento River (30 Foot Project)	Cutterhead/Pipeline 150K CY	IFB Unrestricted	Jun '22	\$5M to \$10M
Suisun Bay Channel	Clamshell 175K CY	IFB SBA Set-Aside	Jul '22	\$5M to \$10M
Oakland Harbor	Clamshell 900K CY	IFB Unrestricted	Jul '22	\$10M to \$25M
Napa River	Clamshell 75K CY	IFB SBA Set-Aside	Aug '22	\$1M to \$5M
Humboldt Bar & Entrance*	Hopper 1100K CY	IFB Unrestricted	Mar '22	TBD

\*West Coast Hopper Contract administered by USACE Portland District





# FY 2022 DREDGING PROJECT LOCATIONS



# FY 2022 DREDGING PROJECT LOCATIONS



# FY 2022 DREDGING PLAN



Project	Bid Open	Award	FEB	MAR	APR	MAY	JUN	JUL	AUG	SEP	OCT	NOV	DEC	JAN	FEB	Estimated CY	Dredge Type	Placement Site	
			FY2022									FY2023							
<b>CONTRACT CLAMSHELL OR CUTTERHEAD PIPELINE</b>																			
Richmond Inner Harbor	9-May (S)	24-May (S)														250kcy	Contract Clam Shell	SF-DODS	
San Rafael Creek	26-May (S)	10-Jun (S)														220kcy	Contract Clam Shell	SF-10 SF-DODS	
San Joaquin River (Port of Stockton)	1-Jun (S)	16-Jun (S)														300kcy	Contract Pipeline	Various Upland	
Sacramento River (30 Foot Project)	13-Jun (S)	27-Jun (S)														150kcy	Contract Pipeline	Various Upland	
Suisun Bay Channel	24-Jun (S)	8-Jul (S)														125kcy	Contract Clam Shell	Upland	
Oakland Harbor	23-Jun (S)	7-Jul (S)														450kcy 450kcy	Contract Clam Shell	SF-11 Upland	
Napa River	18-Jul (S)	1-Aug (S)														75kcy	Contract Clam Shell	South Jefferson	
<b>WEST COAST HOPPER CONTRACT</b>																			
Humboldt Bar & Entrance Channels	9-Mar (S)	23-Mar (S)								WCH						1100kcy	WCHC (Portland)	HOODS	
<b>GOVERNMENT HOPPER</b>																			
Humboldt Interior Channels	N/A	N/A					YAQ									150kcy	Govt Hopper	HOODS	
SF Main Ship Channel	N/A	N/A					ESS									350kcy	Govt Hopper	OBDS/SF-8	
Richmond Outer Harbor	N/A	N/A						ESS								250kcy	Govt Hopper	SF-11/SF-10	
	Solicitation		WCH	West Coast Hopper Contract						Environmental Window									
	Bid Opening		YAQ	Gov't Dredge Yaquina						Mobilization									
	Contract Award		ESS	Gov't Dredge Essayons						Physical Dredging									
	Hopper Dredging																		

\* Program execution is based on the FY22 President's Budget.



# RICHMOND INNER HARBOR



<b>LOCATION:</b>	Richmond, CA
<b>DREDGE TYPE:</b>	Clamshell
<b>PLACEMENT:</b>	SF-DODS or Upland (Contractor's choice)
<b>QUANTITY:</b>	250K CY
<b>DEPTH:</b>	-38' (authorized to -41')
<b>BUSINESS TYPE:</b>	SBA Set-Aside
<b>ADV/BID OPEN:</b>	Apr-May 2022
<b>AWARD:</b>	May 2022
<b>NTP:</b>	Jun 2022
<b>WORK RESTRICTIONS/WINDOW:</b>	1 Jun through 30 Nov





# SAN RAFAEL CREEK



<b>LOCATION:</b>	San Rafael, CA
<b>DREDGE TYPE:</b>	Clamshell
<b>PLACEMENT:</b>	SF-11/SF-DODS
<b>QUANTITY:</b>	220K CY
<b>DEPTH:</b>	Inner Canal: -6' Across-the-Flats: -8'
<b>BUSINESS TYPE:</b>	SBA Set-Aside
<b>ADV/BID OPEN:</b>	May 2022
<b>AWARD:</b>	Jun 2022
<b>NTP:</b>	Jun 2022
<b>WORK RESTRICTIONS/WINDOW:</b>	1 Jun through 30 Nov



# SAN JOAQUIN RIVER, PORT OF STOCKTON

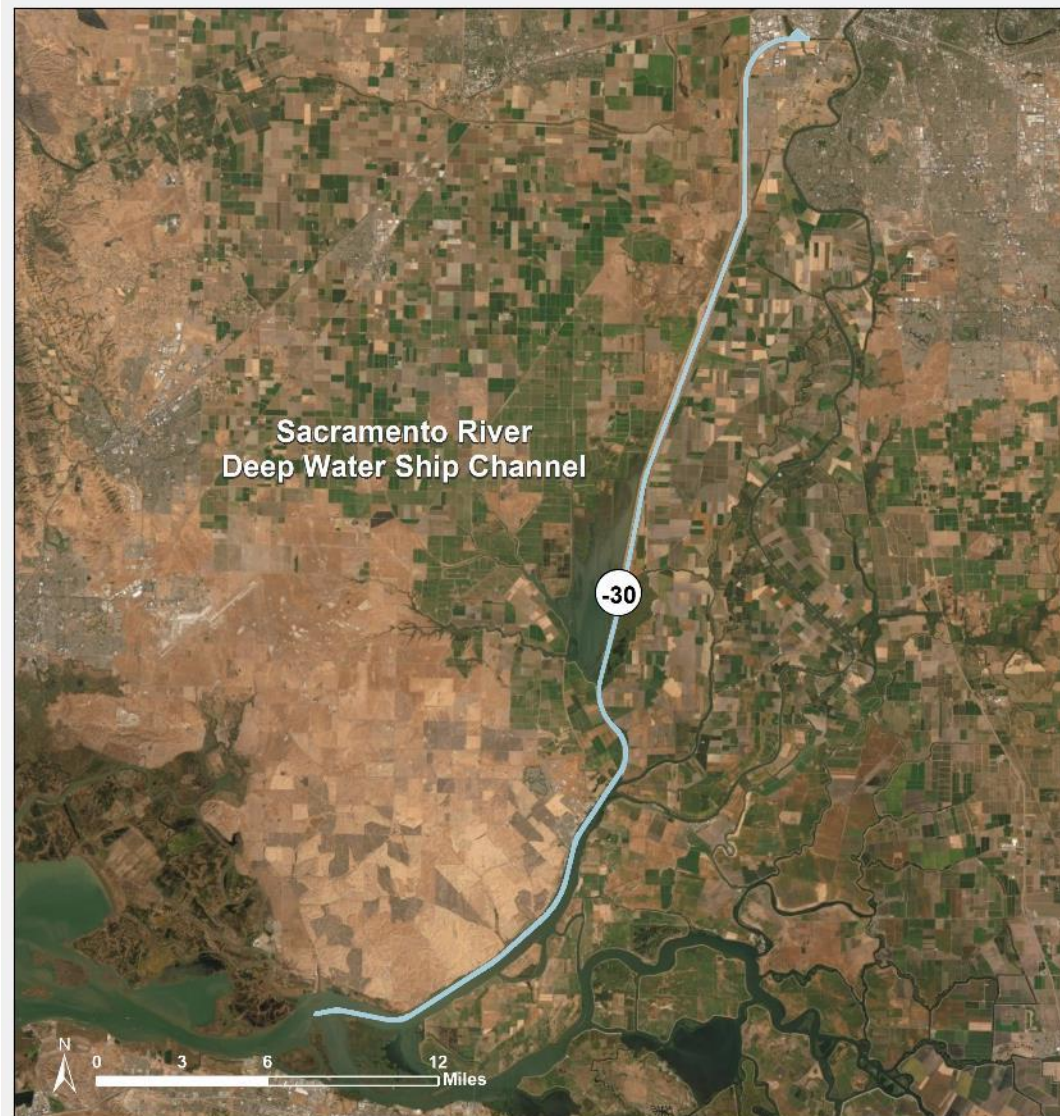


**LOCATION:** San Joaquin River, CA  
**DREDGE TYPE:** Cutterhead/Pipeline  
**PLACEMENT:** Various Upland  
**QUANTITY:** 300K CY  
**DEPTH:** -35'  
**BUSINESS TYPE:** Unrestricted  
**ADV/BID OPEN:** May-Jun 2022  
**AWARD:** Jun 2022  
**NTP:** Jul 2022  
**WORK RESTRICTIONS/WINDOW:**  
1 Aug through 30 Nov





# SACRAMENTO RIVER (30 FT PROJECT)



<b>LOCATION:</b>	Sacramento River, CA
<b>DREDGE TYPE:</b>	Cutterhead/Pipeline
<b>PLACEMENT:</b>	Various Upland
<b>QUANTITY:</b>	150K CY
<b>DEPTH:</b>	-30'
<b>BUSINESS TYPE:</b>	Unrestricted
<b>ADV/BID OPEN:</b>	May-Jun 2022
<b>AWARD:</b>	Jun 2022
<b>NTP:</b>	Jul 2022
<b>WORK RESTRICTIONS/WINDOW:</b>	1 Aug through 31 Oct



# SUISUN BAY CHANNEL



**LOCATION:** Suisun Bay, CA  
**DREDGE TYPE:** Clamshell  
**PLACEMENT:** Upland  
**QUANTITY:** 125K CY  
**DEPTH:** -35'  
**BUSINESS TYPE:** SBA Set-Aside  
**ADV/BID OPEN:** May-Jun 2022  
**AWARD:** Jul 2022  
**NTP:** Jul 2022  
**WORK RESTRICTIONS/WINDOW:**  
1 Aug through 30 Nov





# OAKLAND HARBOR



<b>LOCATION:</b>	Oakland, CA
<b>DREDGE TYPE:</b>	Clamshell
<b>PLACEMENT:</b>	50% In-Bay/50% Upland
<b>QUANTITY:</b>	900kcy
<b>DEPTH:</b>	-50'
<b>BUSINESS TYPE:</b>	Unrestricted
<b>ADV/BID OPEN:</b>	Jun 2022
<b>AWARD:</b>	Jul 2022
<b>NTP:</b>	Jul 2022
<b>WORK RESTRICTIONS/WINDOW:*</b>	1 Aug through 30 Nov

\*1 Jun start typically negotiated with resource agencies.





# NAPA RIVER



<b>LOCATION:</b>	Napa, CA
<b>DREDGE TYPE:</b>	Clamshell
<b>PLACEMENT:</b>	Upland
<b>QUANTITY:</b>	75K CY
<b>DEPTH:</b>	Upper Reach: -10' Lower Reach: -15'
<b>BUSINESS TYPE:</b>	SBA Set-Aside
<b>ADV/BID OPEN:</b>	Jun-Jul 2022
<b>AWARD:</b>	Aug 2022
<b>NTP:</b>	Aug 2022
<b>WORK RESTRICTIONS/WINDOW:</b>	1 Aug through 30 Nov



# QUESTIONS/COMMENTS

Al Paniccia

SPN Navigation Program Manager

[Alfred.Paniccia@usace.army.mil](mailto:Alfred.Paniccia@usace.army.mil)

(415 ) 503-6981

